



Great Products. Better Partners.

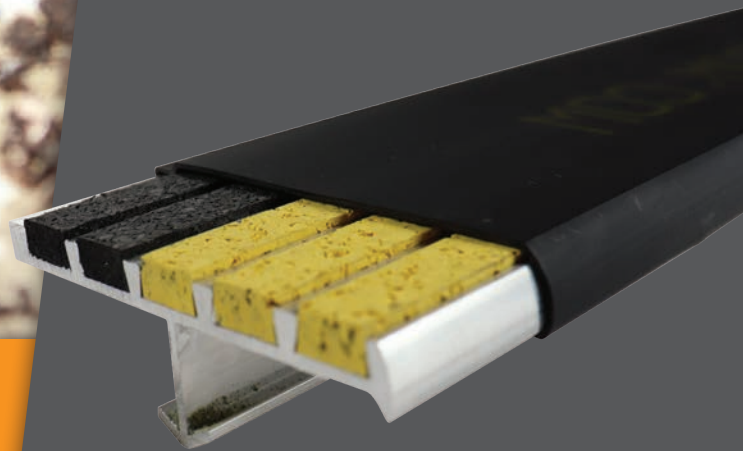
NEW

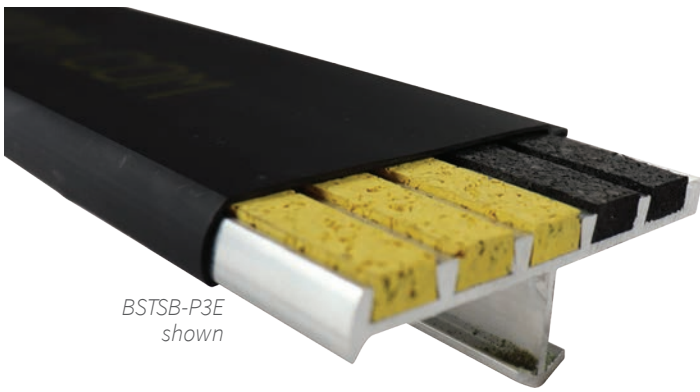
INTRODUCING
Stair Nosing Guards™
The **BEST** temporary
protective nosing
cover on the market!

- Saves stair tread nosings from wear and damage during construction
- Heavy-duty material stands up to foot traffic and equipment
- Made from eco-friendly, recyclable material
- Anti-slip material keeps the jobsite safe
- Comes pre-installed, easy to remove at project's end

Stair Nosing Guards™

JOBSITE + CONSTRUCTION PROTECTION





BSTSB-P3E
shown

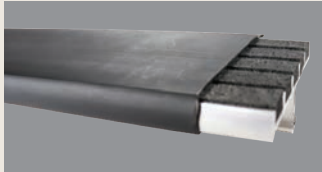
INTRODUCING

Stair Nosing Guards™

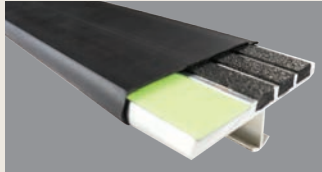
JOBSITE AND CONSTRUCTION PROTECTION

Stair nosing protection during construction made easy! Our heavy-duty, slip-resistant, temporary Stair Nosing Guards™ are preinstalled, engineered for extreme wear, designed for cost effectiveness and quick and easy cleanups.

Stair Nosing Guards™ are available as an option on the following systems:



Ribbed Bar Abrasive and EcoTread™



Lume-A-Lite™ Ribbed Bar Abrasive and EcoTread™

FEATURES

NO INSTALLATION REQUIRED Guards are preinstalled during product production with taped ends to prevent concrete overspray during installation.

EXTREME WEATHER TESTED Certified to -4°F to 120°F.

SLIP-RESISTANT Slip-resistant material protects workers on jobsite.

ECO-FRIENDLY After construction, easily remove and recycle.

Protect Stair Tread Nosings During Construction

Potential damage is always a concern on jobsites. Stair Nosing Guards should be your first line of defense on any site to avoid costly and time consuming repairs.



PREVENT OVERSPRAY
Eliminate mess during stair tread nosing installation.



EASY TO USE
At the end of the project, easily remove guards to reveal protected stair tread nosings.

EXTREME WEATHER TESTED Certified to -4°F to 120°F construction.



ANTI SLIP
Highly slip resistant material protects workers on jobsite.





ECO-FRIENDLY
After construction, remove and recycle.





9300 73rd Avenue North
Minneapolis, MN 55428

Phone (888) 412-3726
Fax (800) 312-3726

